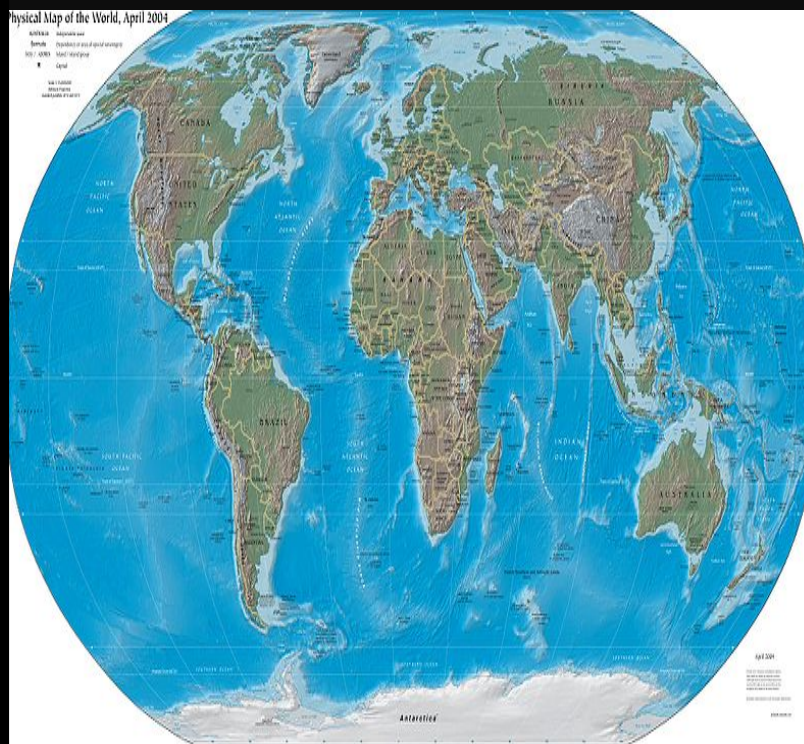
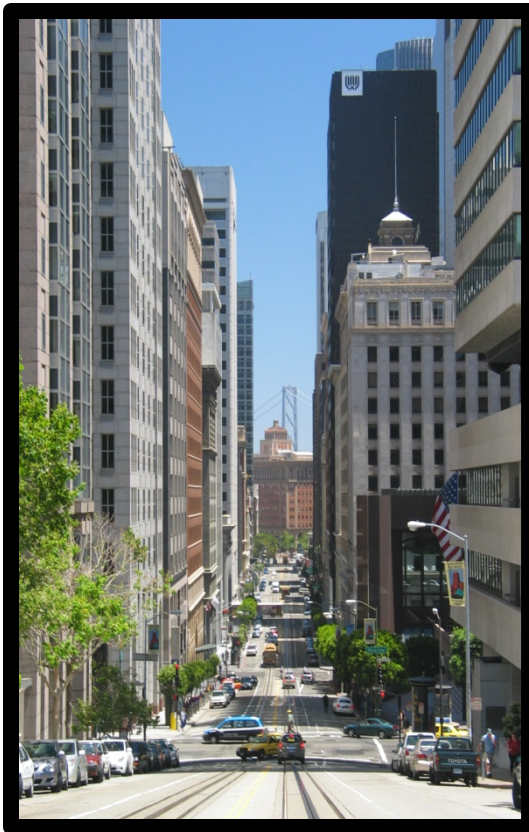




# Geography and How We Live



Left Photo: California Street. June, 2006. © 2006 by Daniel Schwen. Some rights reserved CC-BY-2.5([www.creativecommons.org/licenses/by/2.5](http://www.creativecommons.org/licenses/by/2.5)).  
Middle: World Map. April, 2004. Uploaded by Beltz in en:wikimedia. Released into public domain because it is a work of the United States Federal Government under the terms of Title 17, Chapter 1, Section 105 of the US Code.  
Right: Climbing beans. November, 2009. © 2010 by Neil Palmer. Some rights reserved CC-BY-3.0([www.creativecommons.org/licenses/by/3.0](http://www.creativecommons.org/licenses/by/3.0)).



# Altitude

(Al·ti·tude)

Definition: The height of something above sea level.

Example: It only snows on the mountain because its *altitude* is much higher up and colder than the rest of the area.





# Arctic

(Arctic)



Right Photo: Arctic. 2009. © 2009 by Heraldry in en:wikipedia. Some rights reserved CC-BY-3.0([www.creativecommons.org/licenses/by/3.0](http://www.creativecommons.org/licenses/by/3.0)).

Center Photo: Ice ridges. Spring, 1949.Taken by Rear Admiral Harley D. Nygren, NOAA Corps (ret.). Released into public domain by the *U.S. National Oceanic and Atmospheric Administration*.



# Clay

## (Clay)

Definition: A type of heavy wet soil that is used to make pots or bricks.

Example: The Egyptians used *clay* to make different things.



Photo: An amphora-type pot with 3 columns of hieroglyphs. July 2004 ©2004 by Guillaume Blanchard in en:wikipedia. Some rights reserved <http://creativecommons.org/licenses/by-sa/3.0/deed.en>  
Photo: Hands in clay. © 2013 by Diana Robinson. Some rights reserved <https://creativecommons.org/licenses/by-nd/2.0/>



# Continent

(con·ti·nent)

Definition: One of the main mass of land on Earth

Example: Asia is the largest *continent* on Earth.

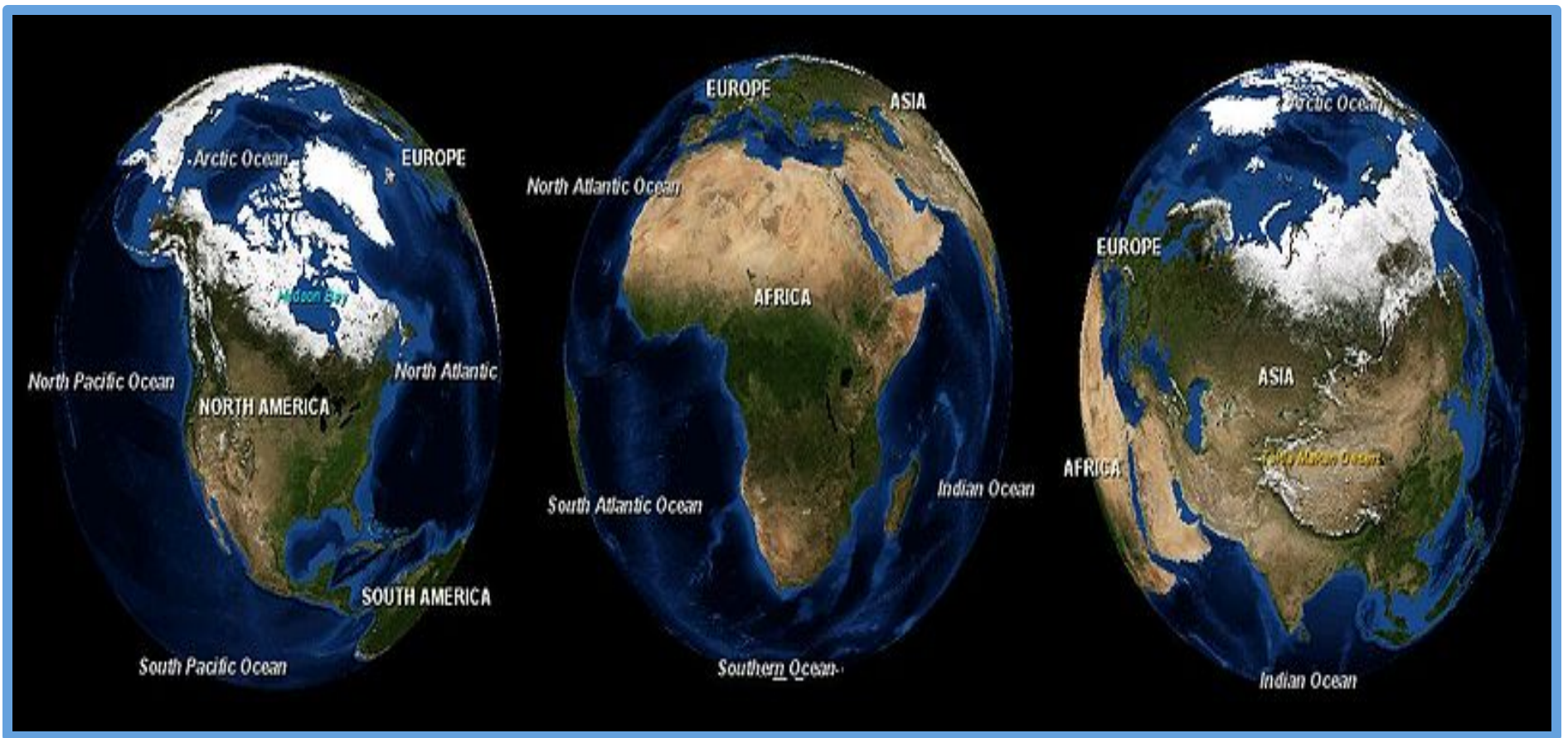


Photo: Three images of earth. October, 2008. Taken by Andrew Oakley. Released into public domain because it is a screenshot from NASA's globe software World Wind using a public domain layer, such as Blue Marble, MODIS, Landsat, SRTM, USGS or GLOBE.



# Degrees (de·grees)

Definition: A unit for measuring temperature.

Example: When it's 100 *degrees* outside many people go to the beach to cool down.

A wide-angle photograph of a crowded beach on a sunny day. The beach is filled with people, many of whom are sitting or lying on towels. Numerous colorful beach umbrellas are open, providing shade. In the background, there are buildings along the coastline and a body of water. The sky is clear and blue.

100°F



# Landscape

(land·scape)

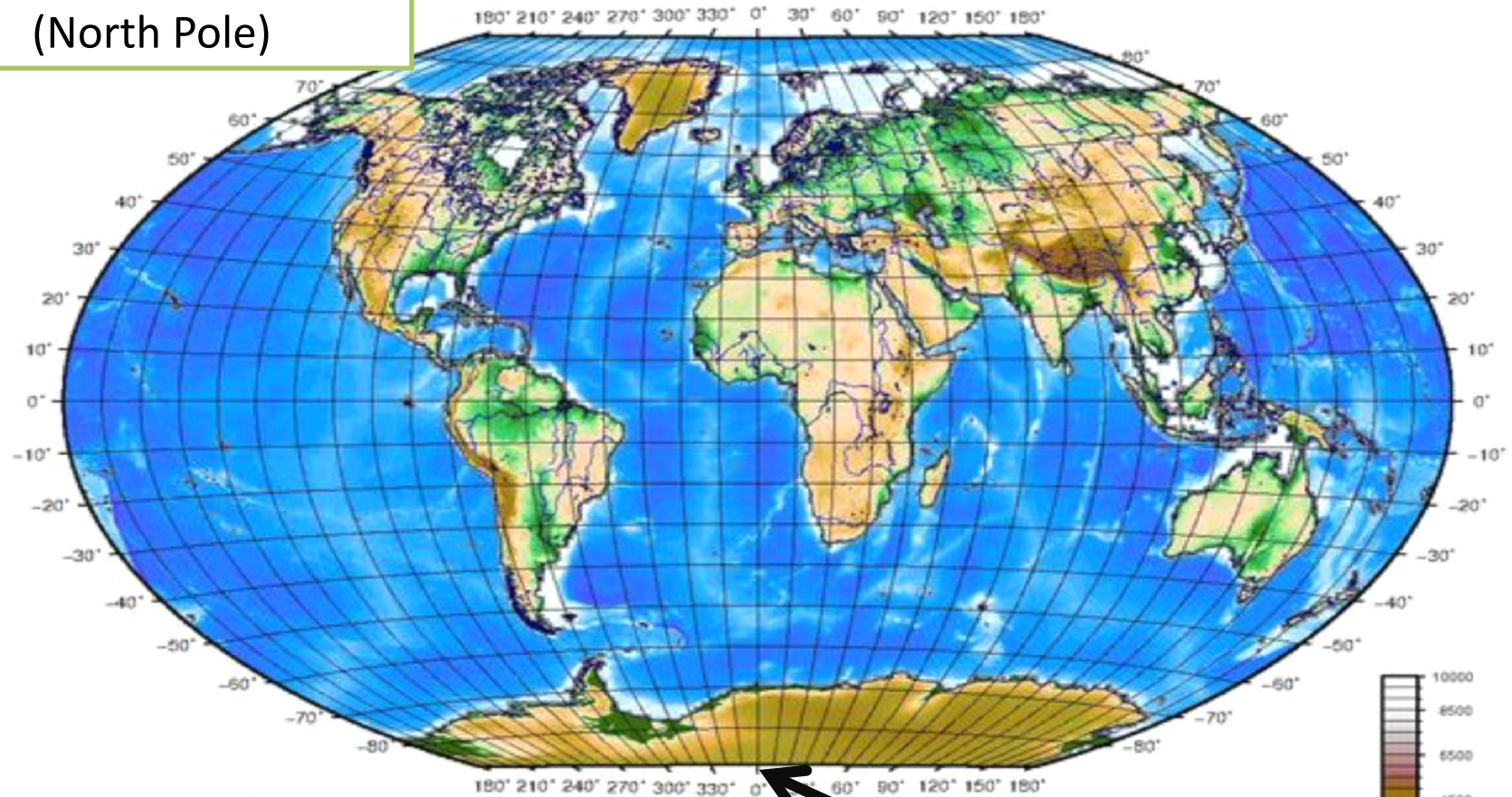


Photo: Wild Goose Island at Glacier National Park. © 2008 by Michelle Leigh Miller. Used by permission

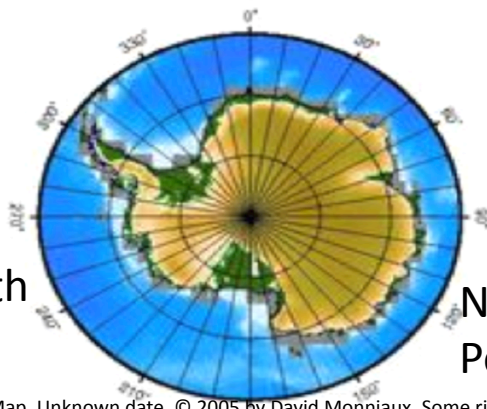


# North Pole

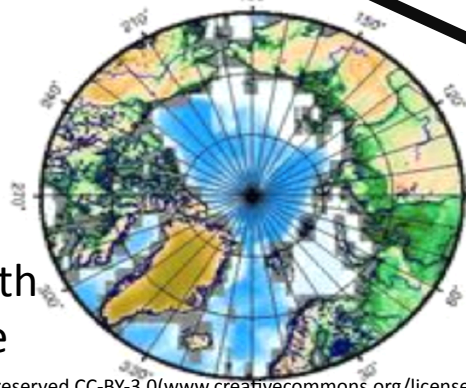
(North Pole)



South Pole



North Pole



South Pole

(South Pole)



# Polar

## (Po·lar)

Definition: Relating to the North Pole or the South Pole

Example: The temperature in the *polar* regions of the world is usually very cold.



Left Photo: Mt. McKinley. August, 2009. © 2009 by Len Turner. Some rights reserved CC-BY-2.0([www.creativecommons.org/licenses/by/2.0](http://www.creativecommons.org/licenses/by/2.0)).

Center photo: World's polar regions. Unknown date. Uploaded by E in en:wikimedia. Released into public domain *because it contains materials that originally came from the United States Central Intelligence Agency's World Factbook*.

Right Photo: Antarctica. December, 2002. Taken by Joe Mastroianni, National Science Foundation. Released into public domain by the National Science Foundation (NSF).



# Pond

(pond)



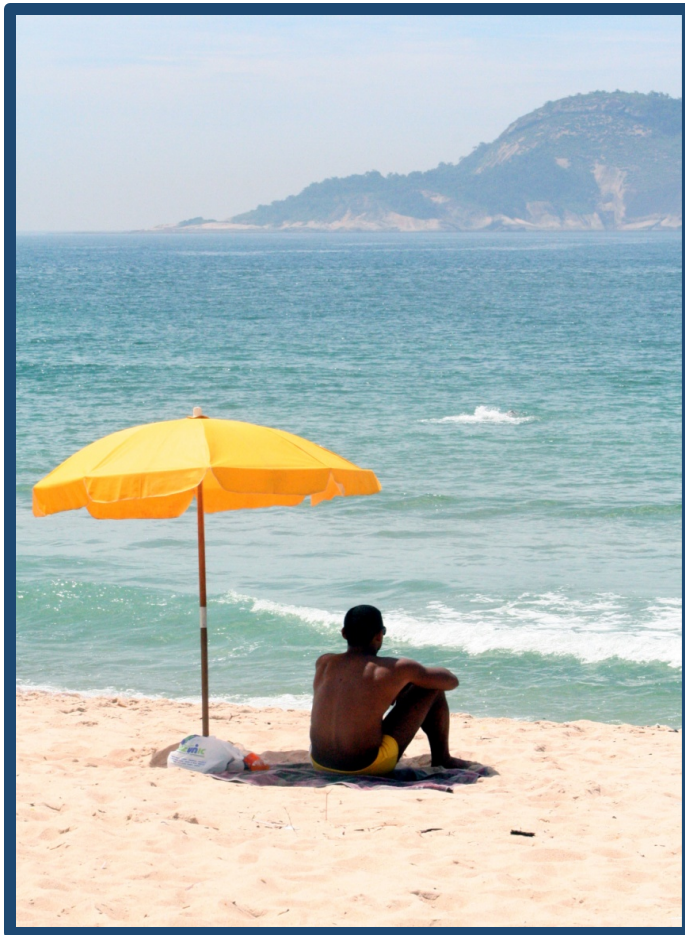


# Temperature

(tem·per·a·ture)

Definition: How hot or cold something is.

Example: These two people use an umbrella, but they use them in different ways because the *temperature* of where they live are very different.



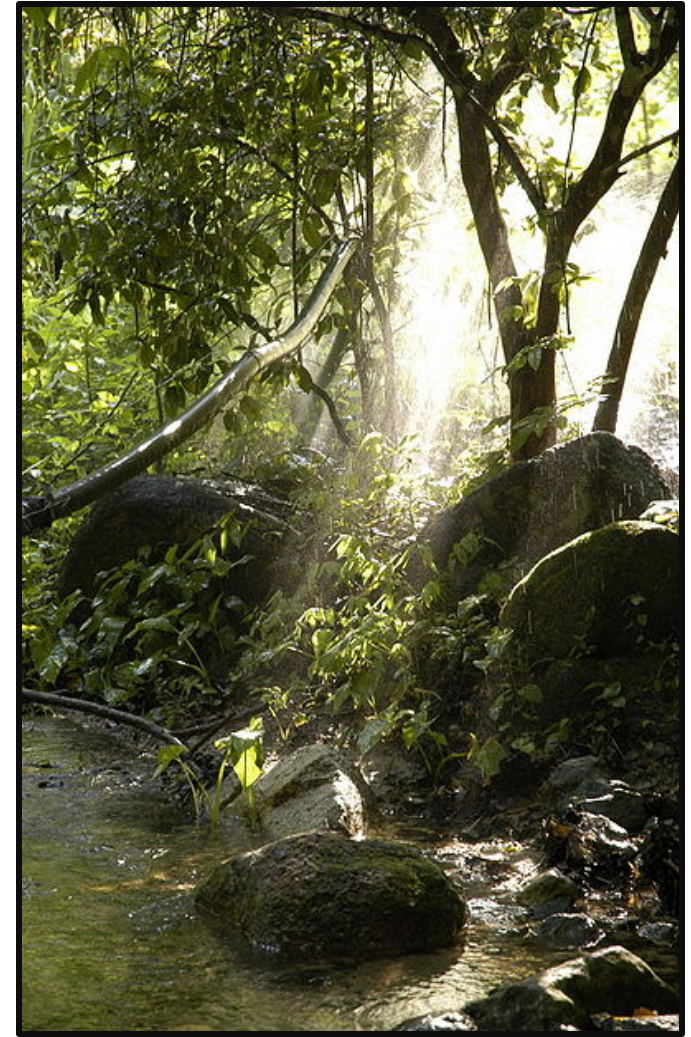
Left Photo: Man sitting under an umbrella. 2006. © 2010 by JohnTex in en:wikimedia. Some rights reserved CC-BY-SA-3.0([www.creativecommons.org/licenses/by/3.0](http://www.creativecommons.org/licenses/by/3.0)).

Right Photo: A man walks down Bleeker St. December, 2009. © 2010 by Jens Schott Knudsen. Some rights reserved CC-BY-2.0([www.creativecommons.org/licenses/by/2.0](http://www.creativecommons.org/licenses/by/2.0)).



# Tropical

(tropical)



Top left photo: Rainforest. June, 2005. Taken by Karduelis in en:wikimedia. Released into public domain by its author, Karduelis.

Bottom Left Photo: Road on Swains Island. July, 2008. Taken by United States Coast Guard, USCG . Released into public domain by the United States Coast Guard.

Right photo: Sierra Madre-inside the jungle. Unknown date. Taken by Perojevic in en:wikimedia. Released into public domain by its copyright holder, Perojevic.



# Umbrella

(um·brel·la)



Left Photo: Umbrellas at a temple in Japan. Unknown date. Taken by Fg2 in en:wikimedia. Released into public domain by the copyright holder, Fg2.

Right Photo: "The dealmaker". May, 2009. © 2009 by Shai Alex in en:wikimedia. Some rights reserved CC-BY-2.0([www.creativecommons.org/licenses/by/2.0](http://www.creativecommons.org/licenses/by/2.0)).