



# Insects



Photo: Honeypot (*Myrmecocystus*) ants storing nectar to prevent colony famine. Taken at the Cincinnati Zoo. September, 2006. ©2006 by Greg Hume. Some rights reserved <http://creativecommons.org/licenses/by/2.5/deed.en>

Photo: This bee, *Osmia ribifloris* (on a barberry flower), is an effective pollinator of commercial blueberries (because it is blue) and is one of several relatives of the blue orchard bee, *Osmialignaria*. Released into public domain by Agricultural Research Service, the research agency of the United States Department of Agriculture.

Corresponds to QuickReads Level B, book 1,  
*Life Science, Insects*



# Beetles



Photo: Emerald Beetle - *Smaragdestes orzini* at Cincinnati Zoo. June, 2008. ©2008 by Ltshears in en: wikipedia. Some rights reserved <http://creativecommons.org/licenses/by/3.0/deed.en>

Photo: An Elephant Beetle crawling on someone's shoulder in Limón, Costa Rica. March, 2004. ©2004 by lyng883 in en: wikipedia. Some rights reserved <http://creativecommons.org/licenses/by/1.0/deed.en>

Photo: Taxicab Beetles - *Pachnoda marginata peregrina* at Cincinnati Zoo. June, 2008. ©2008 by Ltshears in en: wikipedia. Some rights reserved <http://creativecommons.org/licenses/by/3.0/deed.en>



# Carry





# Cockroaches



Photo: Close up of a cockroach. April, 2005. ©2006 by Night Ranger. Some rights reserved <http://creativecommons.org/licenses/by/2.0/deed.en>.

Photo: A bush cockroach (*Ellipsidion australe*). May, 2006. ©2006 by Cyron Ray Macey. Some rights reserved <http://creativecommons.org/licenses/by/2.0/deed.en>.



# Crawl

- If an insect *crawls*, it moves there.
- Example: Insects *crawl* from place to place.

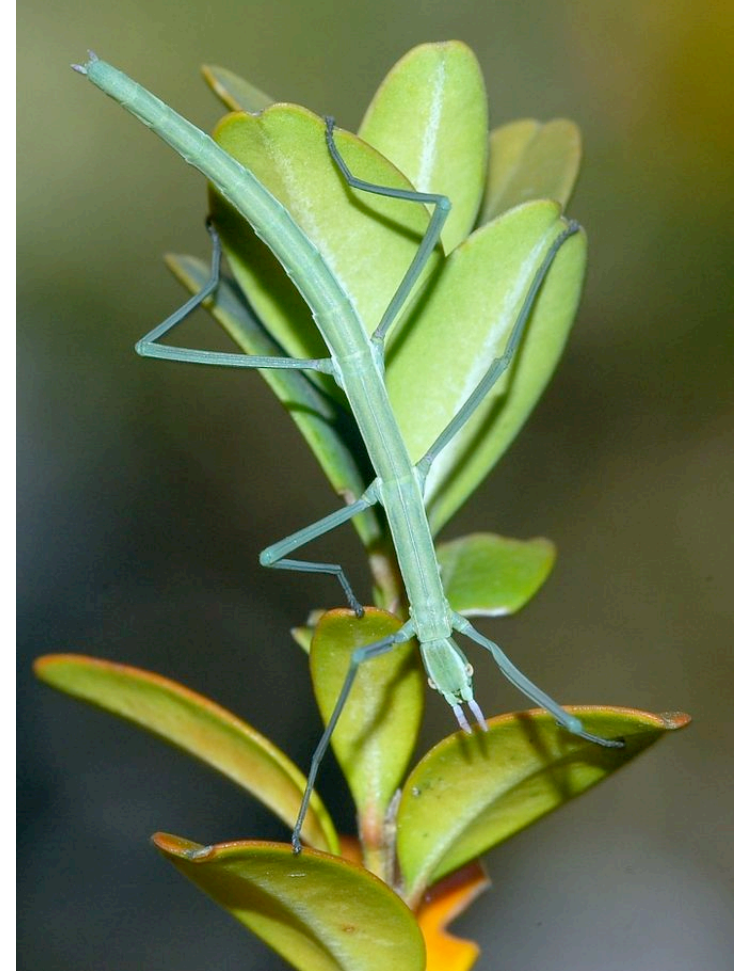


Photo: Caterpillar of a Magpie Moth (*Abraxas grossulariata*). June, 2009. ©2009 by Acélan. Some rights reserved [www.creativecommons.org/licenses/by-sa/3.0-2.5-2.0-1.0](http://www.creativecommons.org/licenses/by-sa/3.0-2.5-2.0-1.0)

Photo: The ant species *formica rufa* on a human hand. April, 2009. ©2009 by Wilder Kaiser. Some rights reserved [www.creativecommons.org/licenses/by-sa/3.0](http://www.creativecommons.org/licenses/by-sa/3.0).

Photo: Spanish Walking Stick (*Leptynia hispanica*), Le Caylar, Languedoc-Roussillon, France. June, 2006. ©2006 by Fritz Geller-Grimm and Felix Grimm. Some rights reserved <http://creativecommons.org/licenses/by-sa/2.5/deed.en>



# Farmers



Photo: Harvesting potato in Dieng Plateau, Central Java, Indonesia. July, 2007. ©2007 by Midori in en:wikipedia. Some rights reserved <http://creativecommons.org/licenses/by-sa/3.0/deed.en>.

Photo: Rice-planting-machine, Katori-city, Japan. April, 2007. ©2007 by katorisi in en:wikipedia. Some rights reserved <http://creativecommons.org/licenses/by-sa/3.0/deed.en>.



# Goliath

- Used to describe something that is big.
- Example: The *Goliath* beetle is much larger than other kinds of beetles.





# Greenflies



Photo: Large colony with mixed stages of apterous aphids. September, 2006. ©2006 by Whitney Cranshaw, Colorado State University, United States. Some rights reserved <http://creativecommons.org/licenses/by/3.0/us/deed.en>



# Houseflies





# Insect

Many insects have

- 2 special eyes
- Two feelers
- Hard shell covering their body
- Three-part body
- Three pairs of legs





# Ladybug





# Feelers



Photo: Longhorn Beetle "Whitespotted Sawyer" (*Monochamus scutellatus oregonensis*), Sequoia National Park, USA. July, 2006. ©2006 by Thomas Schoch. Some rights reserved <http://creativecommons.org/licenses/by-sa/3.0/deed.en>.

Photo: Yellowjacket (*Vespa*). October, 2007. ©2007 by Richard Bartz. Some rights reserved <http://creativecommons.org/licenses/by-sa/2.5/deed.en>.

Photo: Emperor Gum Moth. September, 2004. ©2004 by Fir0002 in en:wikipedia. Some rights reserved <http://creativecommons.org/licenses/by-sa/3.0/deed.en>



# Underground





# Germs

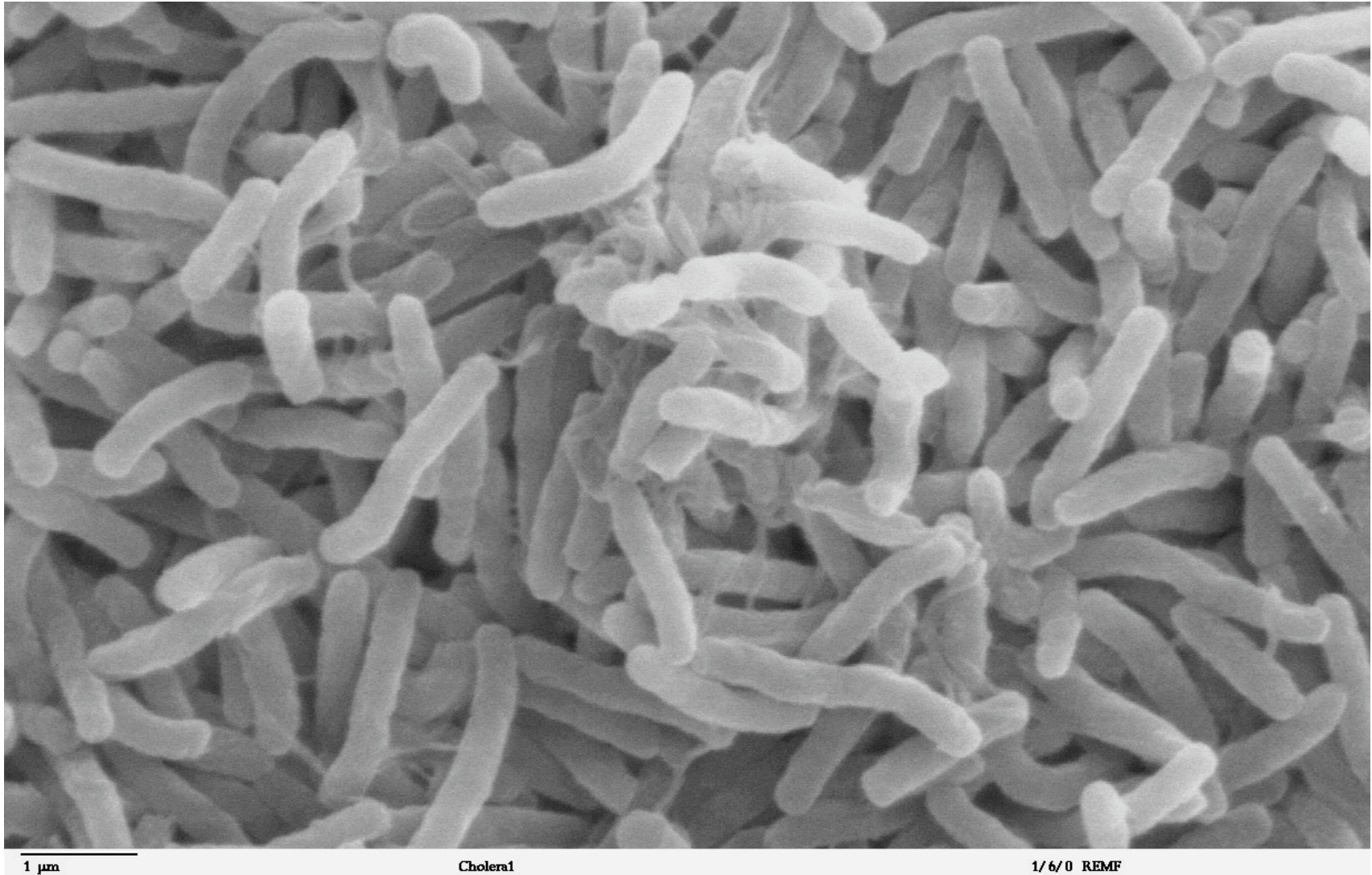


Photo: Scanning electron microscope image of *Vibrio cholerae* bacteria, which infect the digestive system. Released into public domain by Dartmouth Electron Microscope Facility, Dartmouth College.